

## NEW PRODUCT INFORMATION

**TO: FIRESTONE LICENSED RED SHIELD CONTRACTORS  
FIRESTONE SALES REPRESENTATIVES  
FIRESTONE DISTRIBUTORS**

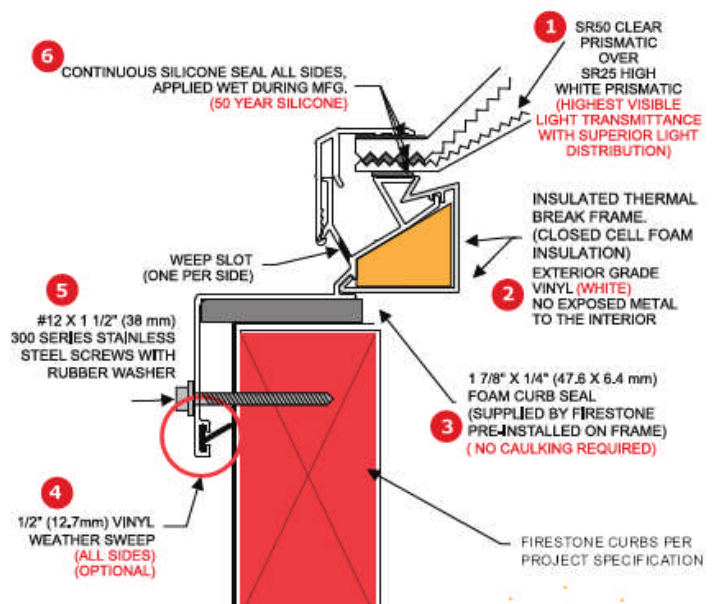
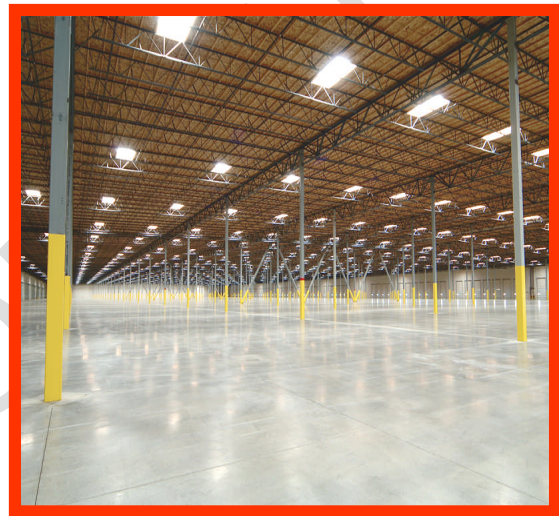
**FEBRUARY 2, 2010**

### RE: SunWave™ Daylighting System

Firestone Energy Solutions is ready for "Lighting Your World the Natural Way". Firestone's **SunWave Daylighting System** will elevate Firestone daylighting products to the top of the market when it comes to installing commercial roofs along with high performance daylighting products. The SunWave dome and technically-engineered frame design brings great benefits to our customers, including:

- **OPERATING COST SAVINGS** – SunWave Daylighting System replaces electric lighting for up to 70% of daylight hours in a building.
- **BRIGHTER LIGHT LONGER** – SunWave domes direct more of the transmitted light to the work plane area without producing glare, hot spots or UV damage to interior merchandise or furnishings. SunWave domes catch up to 20% more light at low sun angles than standard shapes.
- **QUICK RETURN ON INVESTMENT** – The short-term payback for installing the SunWave Daylighting System can be as little as three years due to substantial energy savings and by utilizing available local and federal government incentives or rebates for daylighting.
- **GREATER ENERGY EFFICIENCY** – Over the long term, SunWave Daylighting reduces the pollution of water and air, and the production of greenhouse gases – the byproducts of generating electricity from coal fired plants.
- **TIGHT SEAL** – All SunWave domes come equipped with an insulated, condensation-resistant, thermally broken frame and integrated exterior weeping wells, eliminating the buildup of moisture in the frame.
- **50% STRONGER THAN BUILDING CODES REQUIRE** – SunWave domes pass a 200 lb drop test from 2' above the highest part of the dome as well as a 490 lb in 1 ft<sup>2</sup> point loading test.
- **HAIL RESISTANT** – SunWave dome is approved for use in Class 3 [resistant up to 1.75" (44.5 mm) diameter hail] Hail Risk Zones.
- **WIND RESISTANT** – SunWave polycarbonate dome is approved by Dade County NOA for High Velocity Hurricane Zone requirements.

The **SunWave dome** formation, specified by Firestone, consists of a double-glazed, acrylic, prismatic layered dome, one clear and the other high white that provides the highest visible light transmittance with superior light distribution, compared to sunlight domes.



There are over 4,000 tiny prisms per sq ft (0.1 sq m). The prisms refract, direct and diffuse sunlight into thousands of micro sunbeams. This is a novel concept in daylighting optical design.

**SunWave curbs** support the domes and come in a variety of sizes and gauge thicknesses, in either metal or wood. All curbs (insulated or non-insulated) come standard with a built-in Safe-Security Guard for fall protection in compliance with OSHA regulations. Safe-Security Guards are also available separately.

UL rated and FM approved **SunWave smoke hatches** are available with two domes side-by-side, providing both fire safety and daylighting. Each product is rated for its live load-resistance of 10, 25, and 30 lbf (40.4, 110, and 132 N) for operation of its spring loaded mechanism. They automatically open in the event of a fire, when the rated UL fusible link is reached. Various activation temperatures for the fusible link may be specified, such as 165 °F (73.9 °C), 212 °F (100 °C), 286 °F (141 °C), 360 °F (182 °C), 370 °F (188 °C), or 386 °F (197 °C).

**SunWave Daylighting may be included in the 5, 10, 15, and 20-year Firestone Red Shield™ warranty.**

**Ordering Process:** The customer or Firestone Sales Representative may contact the Estimating Services Department to request a job quote and/or a SkyCalc assessment. **SkyCalc** is a tool to help building designers determine the optimum daylighting strategy that will achieve maximum daylighting and HVAC energy savings for a building. Forms are available in the **Sales Rep Toolbox**.

**For quotes or for ordering, contact:**

**Firestone Estimating Services Department**

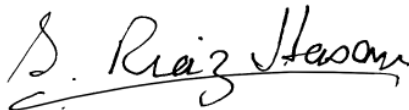
250 West 96<sup>th</sup> Street • Indianapolis, IN 46260

Phone: 800-428-4442 • Fax: 800-353-8525

[estimatingservicesdept@firestonebp.com](mailto:estimatingservicesdept@firestonebp.com)

Additional information, sizes and part numbers are listed on the **Technical Information Sheets:**

- 1801 – SunWave Daylight System with Aluminum Frame
- 1802 – SunWave Roof Curb
- 1803 – SunWave Smoke Hatch



Riaz Hasan  
Accessories Marketing Manager

